

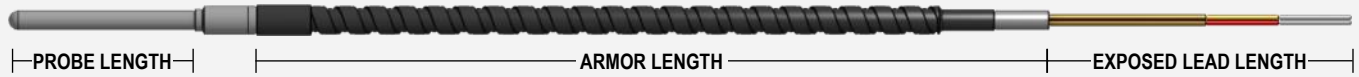
ARMORED THERMOCOUPLES

STYLE

8 – PROBE WITH 1/4" MOUNTING TUBE AND SS ARMORED CABLE



9 – PROBE WITH 1/4" MOUNTING TUBE AND PVC COVERED SS ARMORED CABLE



I.S.A. CALIBRATION

E – CHROMEL / CONSTANTAN **K** – CHROMEL / ALUMEL
J – IRON / CONSTANTAN **T** – COPPER / CONSTANTAN

MATERIAL

30 – 304 STAINLESS STEEL **32** – 316 STAINLESS STEEL
31 – 310 STAINLESS STEEL **39** – INCONEL

NUMBER OF ELEMENTS

S – SINGLE **D** – DUAL

SHEATH DIAMETER

5 – 0.188" **6** – 0.250"

JUNCTION TYPE

G – GROUNDED **RR** – UNGROUNDED
R – UNGROUNDED (DUAL ISOLATED PAIR)

MOUNTING OPTIONS

32 – SS COMPRESSION FITTING (SEE SIZE CHART)

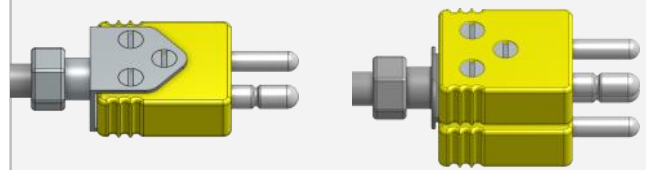


TUBE SIZE	THREAD NPT				
	1/8	1/4	3/8	1/2	3/4
3/16	G	H		I	
1/4	J	K	M	P	

T – TEFLON FERRULE

TERMINATION OPTIONS

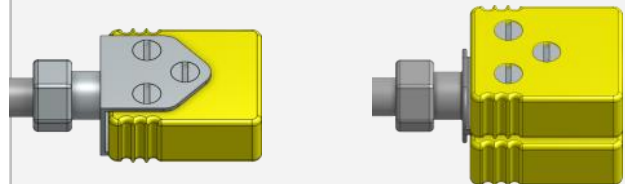
1825 – MALE ROUND PIN CONNECTOR



SINGLE ELEMENT

DUAL ELEMENTS

1826 – FEMALE JACK CONNECTOR

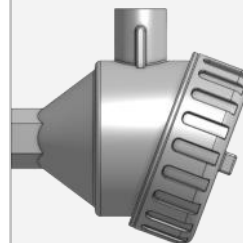


SINGLE ELEMENT

DUAL ELEMENTS

TERMINATION HEADS

PROVIDED WITH 3/4" NPT CONDUIT UNLESS SPECIFIED



SA – SMALL ALUMINUM – WEATHERPROOF

SAEXP – ALUMINUM – EXPLOSION PROOF

TERMINATION HEADS COME WITH STANDARD CERAMIC TERMINAL. CONTACT A THERMO-PROBES SALES REPRESENTATIVE FOR MORE OPTIONS.

NOTE: MOST COMMON OPTIONS SHOWN ON THIS PAGE. FOR MORE PRODUCT OPTIONS, PLEASE CONTACT A THERMO-PROBES SALES REPRESENTATIVE.

PROBE STYLE	I.S.A. CALIB.	MATERIAL	# OF ELEMENTS	SHEATH DIAMETER	PROBE LENGTH (INCHES)	JUNCTION TYPE	ARMOR LENGTH	EXPOSED LEAD (INCHES)	MOUNTING OPTIONS	TERMINATION OPTIONS
-------------	---------------	----------	---------------	-----------------	-----------------------	---------------	--------------	-----------------------	------------------	---------------------